

PLAN NO: BR-10003

Prepared by: D. Sturko June 1, 2011

Reviewed by: C. Chippett June 1, 2011

Approved by: Philip Borgel June 29, 2011

File: Brush Diagrams.dgn

Description

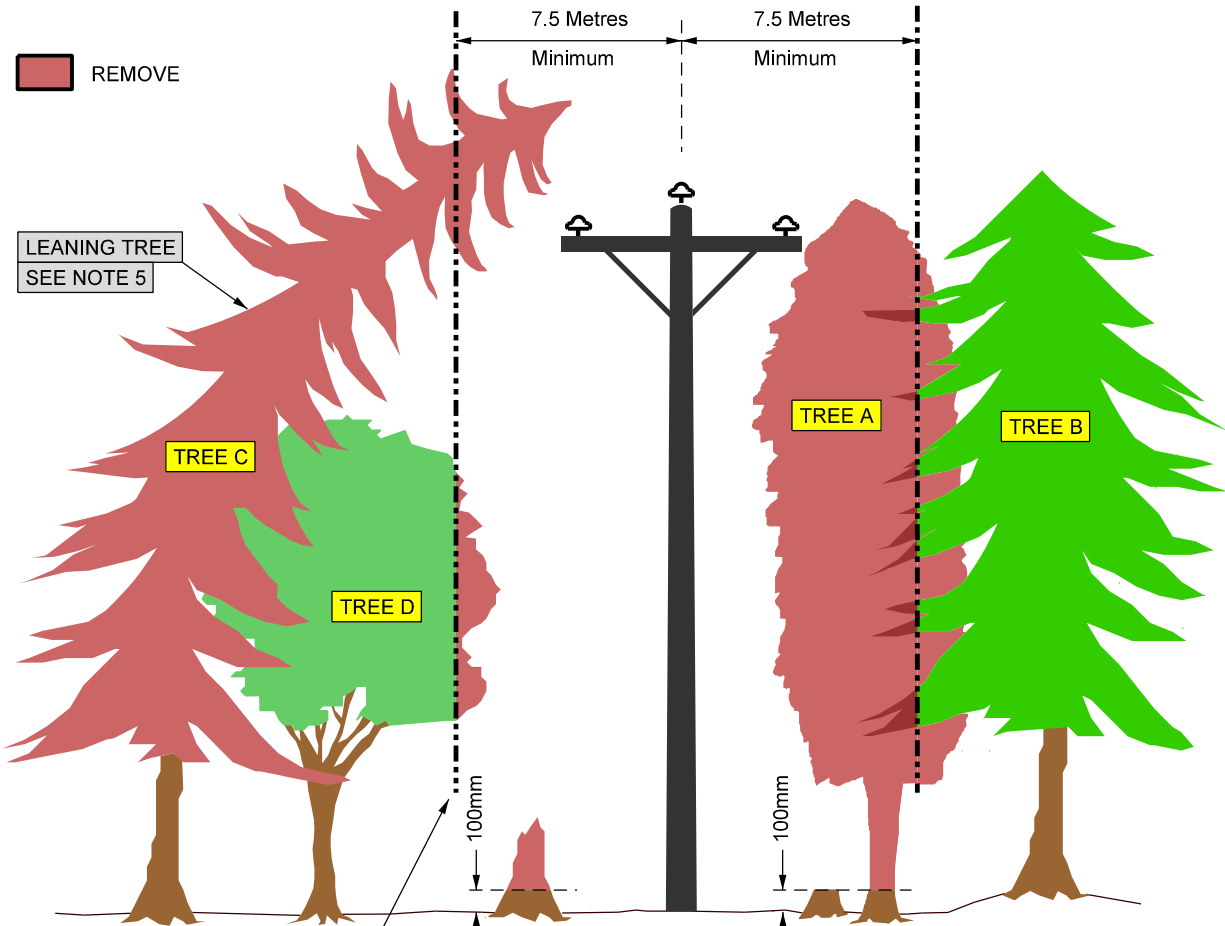
Right of Way Site Preparation & Brushing Requirement for Three Phase High Voltage Lines up to 34kV

"Three Phase Primary"

LEGEND / NOTES

*Customer Brushing identified by Pink with Black striped flagging on private property only.
*ATCO Electric Yukon Qualified Brush Removal identified by White & Red striped flagging.

No.	Date M-D-Y	App.	Revision
A	01-23-2010	DS	Revision to Diagram for approval
B	06-29-2011	DS	Approved



■ REMOVE

LEADING TREE
SEE NOTE 5

TREE C

TREE D

100mm

TREE A

TREE B

100mm

BRUSHING LIMIT ON CUSTOMER PROPERTY
MARKED BY PINK WITH BLACK STRIPED FLAGGING

DO NOT CUT DOWN TREES FLAGGED "DANGER TREE"
SEE NOTE 1

RIGHT OF WAY SITE PREPERATION NOTES

1. Trees or brush that have been flagged by "DANGER TREE" flagging are a threat to fall into an existing live powerline and the CUSTOMER IS NOT TO CUT DOWN.
ATCO Electric Yukon will arrange for the Powerline Crew to cut down at time of construction or send out a Qualified Utility Brusher to cut down. It will be the customer's responsibility to clean up after the tree has been cut down.
2. The powerline right of way CUSTOMER BRUSHING LIMIT is identified by PINK WITH BLACK STRIPED FLAGGING. It is the customers responsibility to remove all trees, brush, deadfall and limbs within the flagged limits on PRIVATE PROPERTY prior to construction of powerline. This includes all obstacles that will hinder construction of the powerline.
**Do not brush within flagged brush limits marked with red & white striped flagging (Identified for ATCO Electric Yukon qualified contractor brushing) .
3. All flagging on site indicates absolute minimum brush removal. The right of way is to be cleared of all vegetation and obstacles which is incompatible with the operation of a electrical system. (Tall growing plant species i.e.Poplar, Spruce, Tall Willow etc.)
4. All trees and brush with stumps inside the flagged Brushing Limits are to be removed. (See TREE A in Diagram above)
5. All trees and brush with stumps outside of the flagged Brushing Limits are to have there limbs trimmed to 5.0 metres from the centreline of powerline. (See TREE B in Diagram above). If trimming is not an option then the tree must be removed.
6. All trees and brush that are outside flagged limits and are leaning towards the proposed powerline right of way are a threat to fall and must be removed before powerline is constructed. (See TREE C in above Diagram). Dead or rotting trees close to the flagged limits must also be removed.
7. Stumps must be cut as flush as possible to the ground and cannot exceed 100mm from ground level.
**Good access within right of way to poles and anchors saves construction time and in turn reduce's cost.
8. Wood is to be salvaged or disposed of in an acceptable manner.