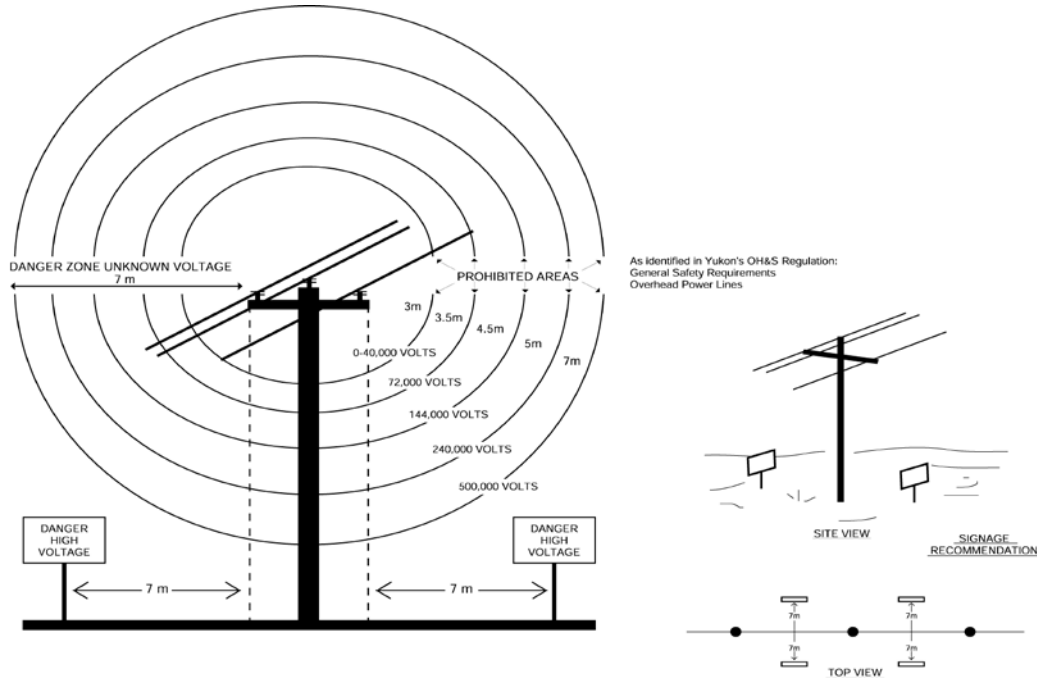


MINIMUM REQUIREMENTS FOR UNQUALIFIED WORKERS AND/OR EQUIPMENT OPERATING NEAR OVERHEAD POWER LINES



Purpose: These minimum requirements are for your protection and safety. Contact with power lines is extremely dangerous and could result in death.

- 1) Danger Zone (unknown voltage) Equipment shall not work within 7metres (23 feet) of any overhead power line without notifying the local **ATCO ELECTRIC YUKON** office.
- 2) Prohibited Zone of identified voltages (confirmed by **ATCO ELECTRIC YUKON**).
 - a) No unqualified worker or equipment shall encroach on the Prohibited Zone.
 - b) Any work within the 7 meter (23 feet) Danger Zone, but outside the prohibited zone, requires an assigned designated person to act as an observer to ensure the safe limits of approach distances are maintained. The observer must be able to communicate by radio or air horn when workers or equipment violate these limits.
- 3) Power lines must be de-energized if workers or equipment cannot maintain Prohibited Zone clearances, unless under the **DIRECT** supervision of an ATCO ELECTRIC YUKON qualified employee.
- 4) Work around power lines is to be done during daylight hours only.
- 5) Workers are recommended to supply and install a minimum of two Danger High Voltage signs as shown above
- 6) Before work or other activity is commenced in the vicinity of an overhead power line, contact the local **ATCO ELECTRIC YUKON** office to establish the safe limits of approach distances.
- 7) No earth or other materials shall be placed under or adjacent to an overhead power line if it reduces the clearance above ground for the power line.
- 8) No person shall excavate or perform similar work in the vicinity of an overhead power line if it reduces the support for the power line.

Any violation could lead to sanctions under the Yukon OH&S Act and Regulation.

IF YOU ACCIDENTALLY CONTACT AN OVERHEAD POWER LINE

— STAY CLEAR AND CALL ATCO ELECTRIC YUKON —

633-7000 OR 1-800-661-0513

ATCO Electric

YUKON