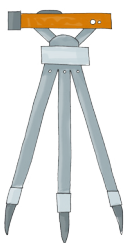




1. Site Selection

Completed 2013 - 2016

- Environmental, social and landowner impacts assessment.
- YESAB application including consultation, review and approval.
- Obtain land use leases, permits and approval.



2. Site Preparation

Spring 2016

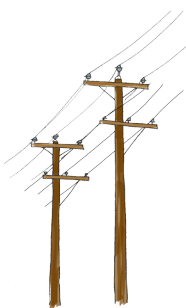
- Survey completed, vegetation removed.
- Site area is leveled and site grade completed.
- Access roads built.
- Area clear of any safety concerns to workers or the public.



3. Construction

Summer and Fall 2016

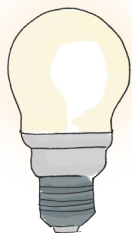
- Fence built.
- Electrical equipment installed.



4. Interconnection

Fall 2016

- Substation is energized and connected to the existing power system.
- Areas of downtown Whitehorse will experience brief outages during this time so that interconnection can be done safely by crews.



5. Operations and maintenance

Ongoing

- Substation increases the amount of power available in downtown Whitehorse and serves as contingency during upgrades and maintenance to other substations and during power outages.
- Substation is maintained as part of ATCO Electric Yukon's regular maintenance and upgrade schedules.